

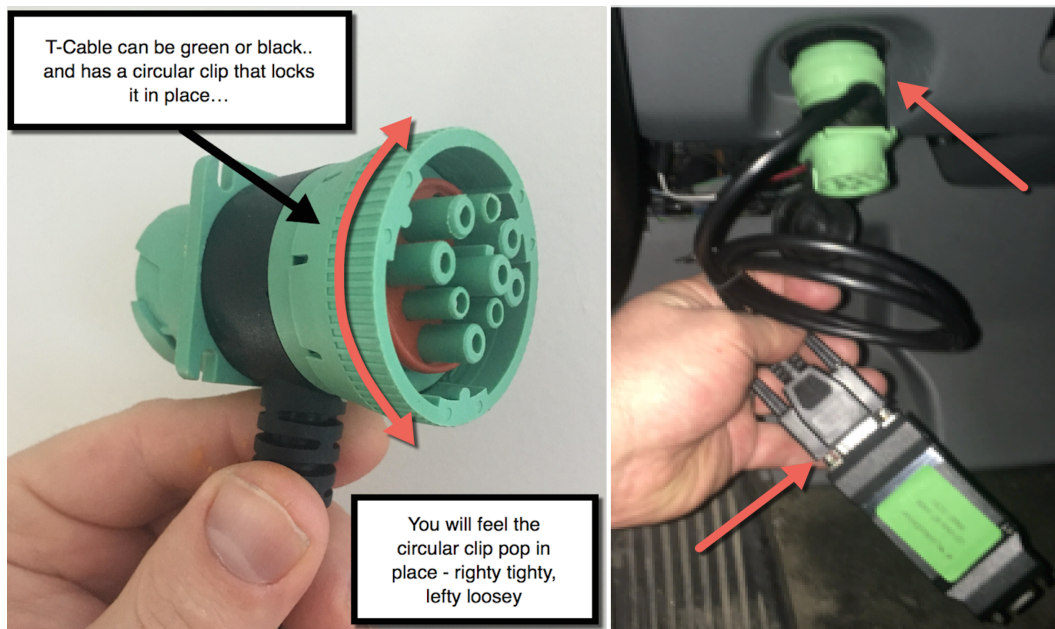
Installing the VNA (Virtual Network Adapter) & Pairing to your Android Device

Pre-Check:

- Take note of the “LD-VNA-BT” number, and the “RNBT” ID located on the VNA (Virtual Network Adapter), highlighted in the picture below.
 - You will need this “RNBT” ID for step 5 in the process
 - Please document the “LD-VNA-BT” number, the “RNBT” ID, and truck number in an agreed-to and sharable document for tracking.



- 1) Make sure your VNA is securely fastened to your J1939 cable by tightening the two thumb screws. This cable can be black, or green, depending on the model and make of your tractor. Once the VNA is securely fastened, locate the diagnostic port of your tractor, and insert the J1939 cable in as shown in the right hand image. As noted, the J1939 screw clip will need to be “locked” in place; also detailed in the left hand image below.

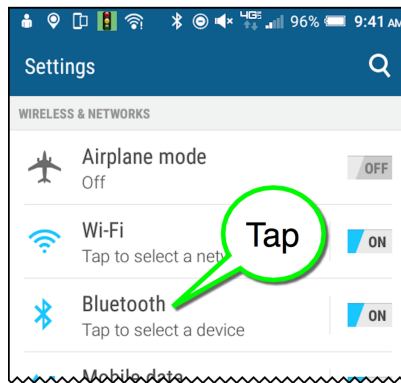


- 2) Turn truck on.

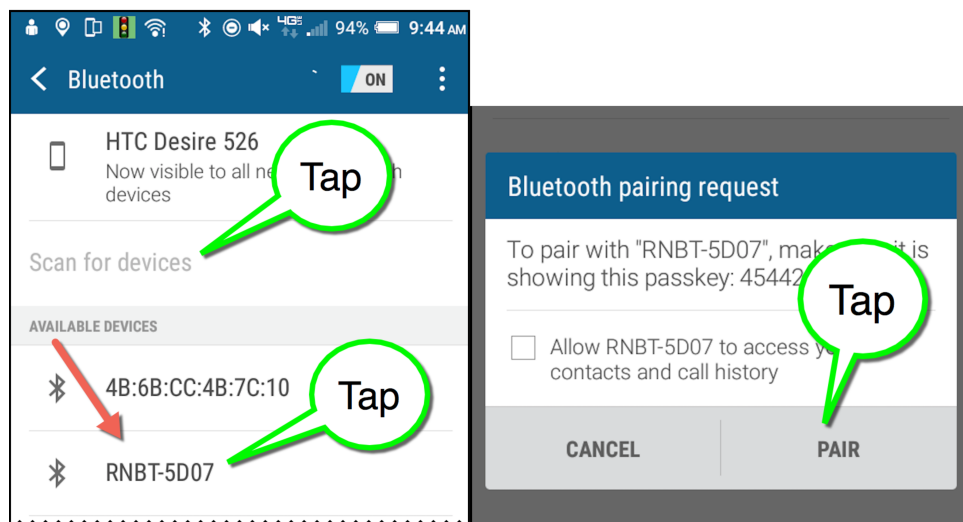
**If you have questions or are unable to connect your new device reach out to
LinkeDrive technical support at 1.866.731.3711 -**

3) Access your Android settings. Settings on most Android devices can be accessed by swiping directly down, and then tapping on the “cog wheel”.

4) Once you are in settings, tap “Bluetooth” to access the Bluetooth menu.



5) Now that you are in the Bluetooth menu, check for the RNBT ID you identified in the “pre-check” step at the beginning of this document, in the list of “available devices.” If you do not see the RNBT ID in the list, tap “Scan” or “Scan for device”. You may have to do this a number of times until the RNBT ID shows in the list. Once you see the RNBT ID in the list, **tap** on it, and then **tap** pair.



6) Your Android device is now paired to the VNA, and will be associated to your tractor.